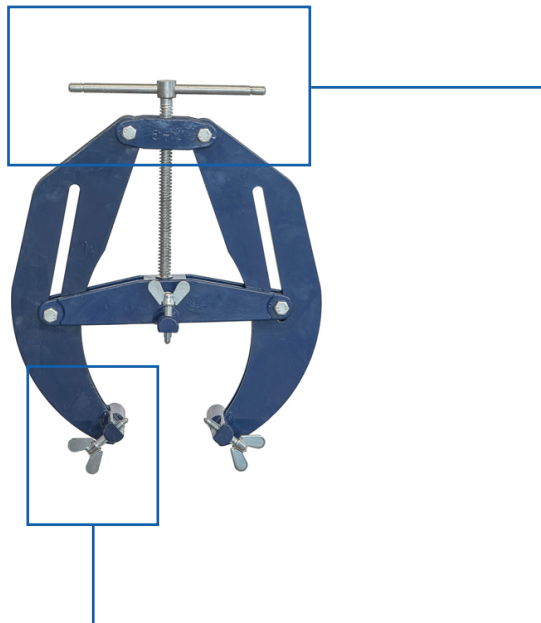
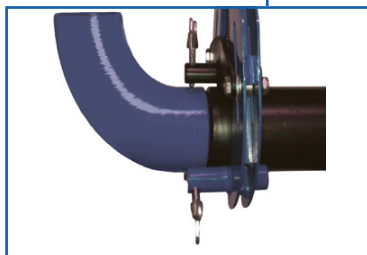


WS Clamp



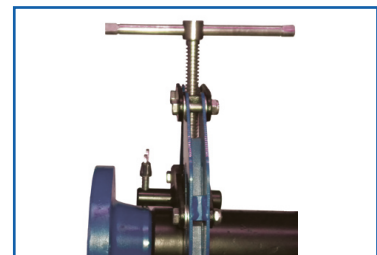
- ## Features
- Robust design and construction
 - Designed for lit -up of pipes, flanges, t-pieces, elbows and other fittings
 - Stainless steel feet and fine adjustment screws, perfect for exotic pipework applications
 - Sliding T-Bar locking handle, ideal for working in tight spots
 - 1-12" pipe diameter clamping range in just 3 clamps
 - Lightweight, suitable for workshop or site work



Stainless steel feet




Sliding T-bar locking handle



Robust yet lightweight design

The WS Pipe Clamp can be used on stainless steel without any additional accessories due to the feet and screws being made from stainless steel, preventing contamination of the pipe.

Available Items

Name	WS Clamp, 1-2½"	WS Clamp, 2-6"	WS Clamp, 5-12"
Image			
Part number	ezg2	ezg6	ezg12
Weight	1,9 kg	5,1 kg	8,2 kg
Pipe Size range	1-2½"	2-6"	5-12"